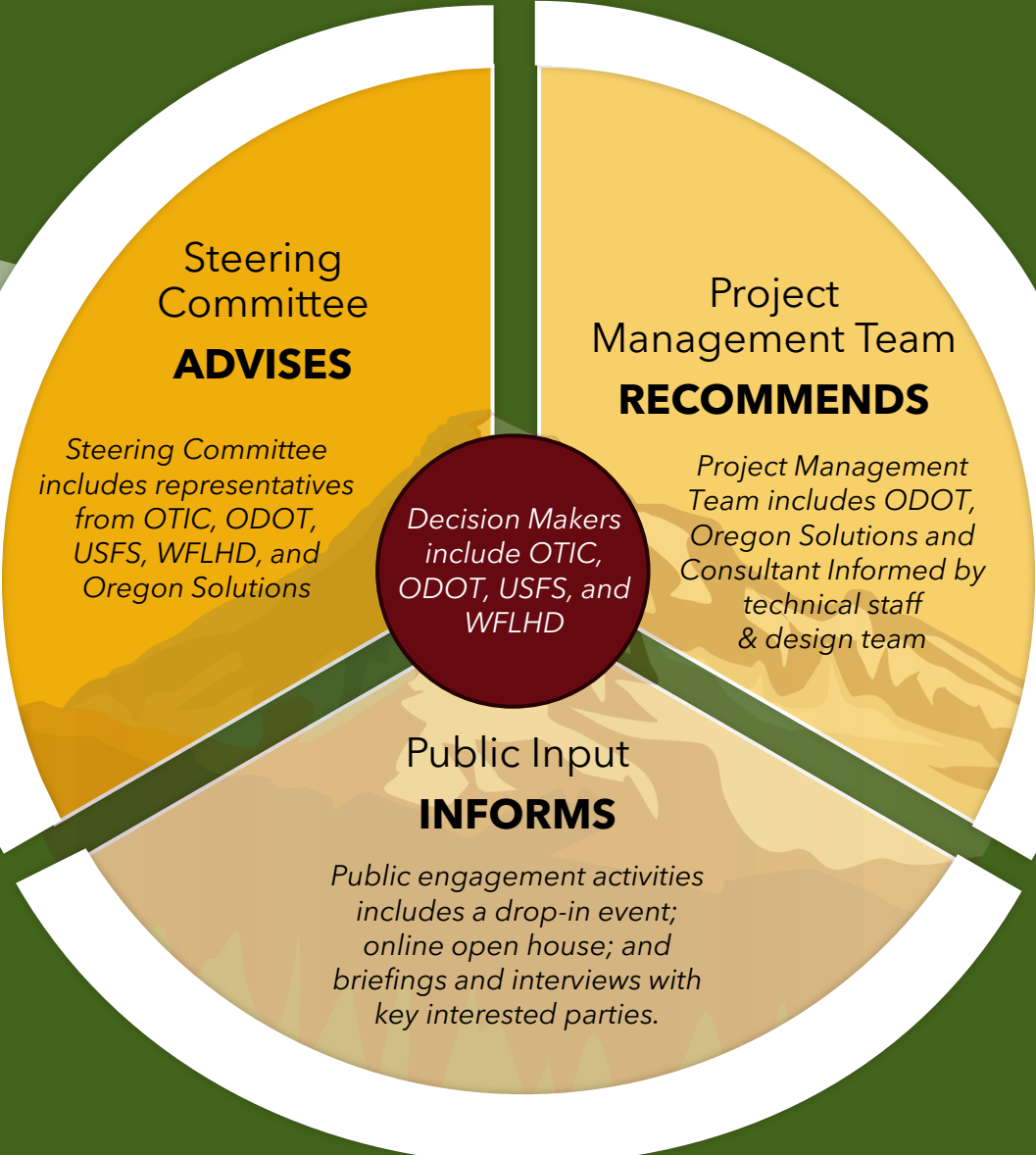


# Project Planning Decision-Making Roles

Agency (ODOT)  
**FACILITATES**

Oregon Solutions  
Rest Area  
Relocation Team  
**GUIDES**



Steering  
Committee  
**ADVISES**

*Steering Committee  
includes representatives  
from OTIC, ODOT,  
USFS, WFLHD, and  
Oregon Solutions*

Project  
Management Team  
**RECOMMENDS**

*Project Management  
Team includes ODOT,  
Oregon Solutions and  
Consultant Informed by  
technical staff  
& design team*

*Decision Makers  
include OTIC,  
ODOT, USFS, and  
WFLHD*

Public Input  
**INFORMS**

*Public engagement activities  
includes a drop-in event;  
online open house; and  
briefings and interviews with  
key interested parties.*